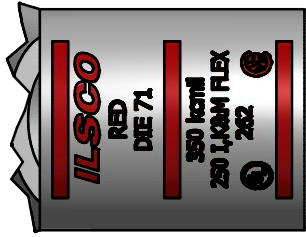
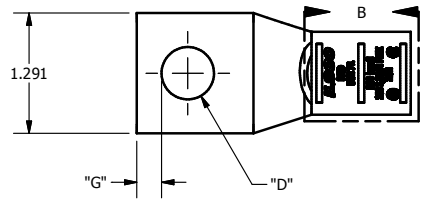


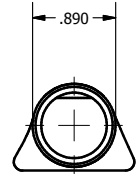
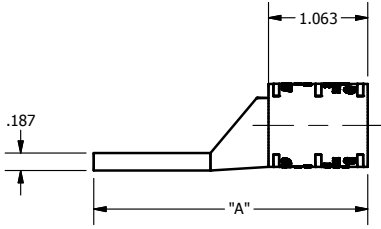
SCREW: NONE	MATERIAL: COPPER	REV: J
CAT. NO.: SEE CHART	PLATING: EL-TIN	DRAWN BY:DW SCALE: NTS
INFORMATION SHEET:	MARKING: SEE CHART	DATE:7/5/2007 SIZE: B



DWG NO: Y1311-S
SHEET: 1 OF 1



DETAIL B
TOP AND BOTTOM INK MARKINGS ARE IDENTICAL
INK COLOR:RED



Catalog Number	"A"	"D"	"G"	TANG MARKING
CSWS-350-14	2.561	0.281	0.180	ILSCO, CSWS-350-14, 350 kcmil, 250 IKM, 262 FLEX, DIE 71, UL, CSA
CSWS-350-516	2.561	0.343	0.180	ILSCO, CSWS-350-516, 5/16, 350 kcmil, 250 IKM, 262 FLEX, DIE 71, UL, CSA
CSWS-350-38	2.561	0.406	0.211	ILSCO, CSWS-350-38, DIE 71, 350 kcmil, 250 IKM, 262 FLEX, UL, CSA
CSWS-350-12	2.936	0.562	0.265	ILSCO, CSWS-350-12, DIE 71, 350 kcmil, 250 IKM / 262 FLEX, UL, CSA
CSWS-350-58	3.123	0.656	0.343	ILSCO, CSWS-350-58, 350 kcmil, DIE 71, 250 IKM / 262 FLEX, UL, CSA
CSWS-350-34	3.373	0.781	0.359	ILSCO, CSWS-350-34, 350 kcmil, 250 IKM, 262 FLEX, DIE 71, UL, CSA
CSWS-350-78	3.623	0.906	0.437	ILSCO, CSWS-350-78, 350 kcmil, 250 IKM, 262 FLEX, DIE 71, UL, CSA

THE INFORMATION CONTAINED WITHIN THIS DOCUMENT IS PROPRIETARY TO ILSCO AND MAY NOT BE DISCLOSED WITHOUT PRIOR WRITTEN CONSENT